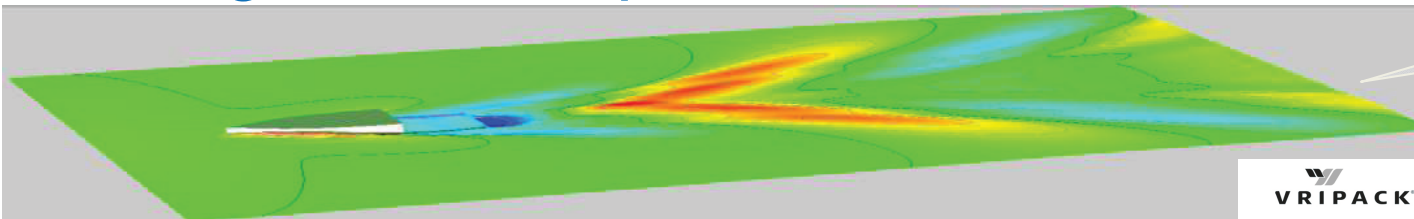


Bavaria E40 Engines & Propulsion - Diesel

SYSTEMS

Fast displacement hull optimized by CFD tests



Performances with Volvo D3 - 150HP -

RPM	Kn	lt/h	lt/nm	Range
idle	3,6	0,9	0,3	
1000	4,4	1,4	0,3	
1500	6,3	4,6	0,7	700
2000	7,6	9	1,2	
2200	8,3	12	1,4	
2400	8,7	15	1,7	300
2600	9,1	18	2,0	
2800	9,5	23	2,4	
full	10	28	2,8	

Test conditions:

Sea state 0, no wind, no waves, no stream, 15°C, clean hull

Configuration: opt fuel tanks - no other main opt equipment

Loads: 30% fuel, 30% water, 2 persons

